

Change your stripes

A trio of plain benches gets a fresh and fun effect.

You will need

SHOPPING LIST

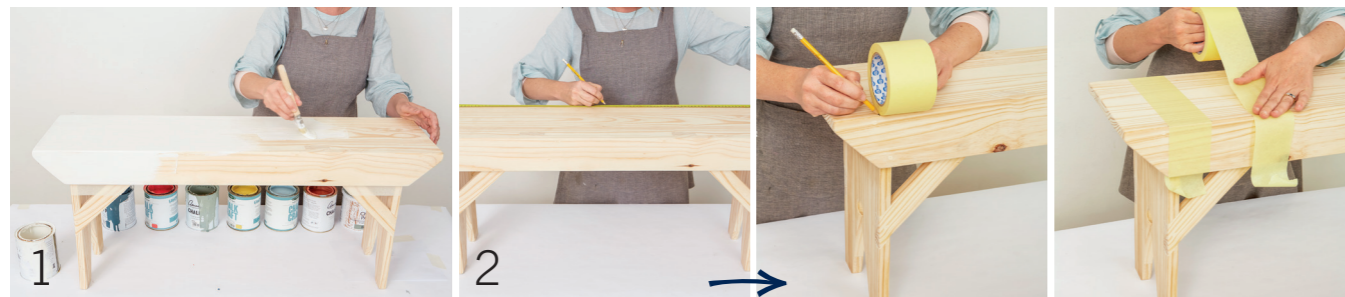
- three similar wooden benches
- wax or sealant
- chalk paint in the colours of your choice; we used a variety of leftovers from different brands
- broad masking tape (ours was 7.3cm wide)

TOOLS

- paintbrushes
- G-clamps

By Shelly Bergh

Photographs Francois Oberholster



1 Coat the seats of two of the benches with two layers of white or off-white paint. Let the paint dry between coats.

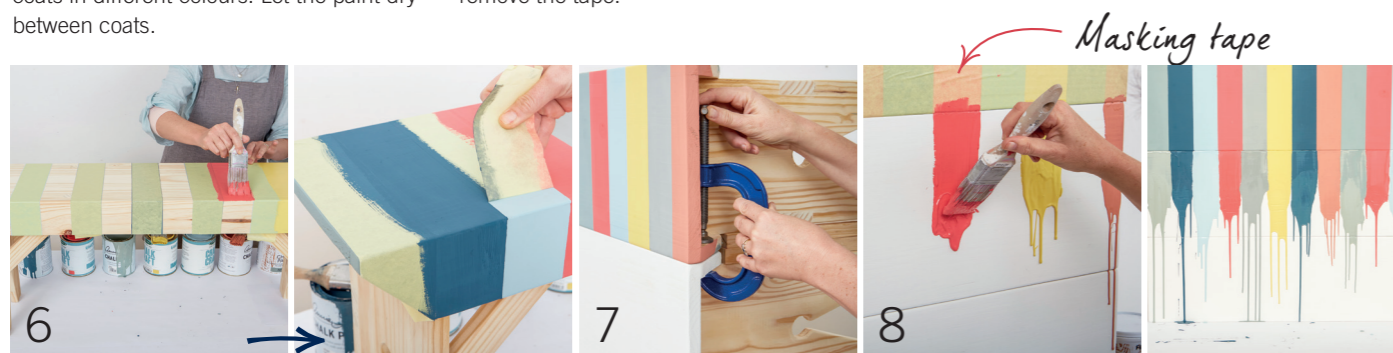
2 While the two white benches are drying, measure and mark the centre on the remaining bench. Use the masking-tape roll to mark intervals of the same width across the top of the bench. Mask every second stripe.



3 Paint all the exposed stripes with two coats in different colours. Let the paint dry between coats.

4 When the second coat has dried, carefully remove the tape.

5 Tape over the lines you painted in step 3.



6 Paint all the exposed stripes with two coats in different colours. Let the paint dry between coats. Once the paint has dried, remove the tape. **7** Stack the three benches on top of each other with the striped one at the top. Use offcut timber as spacers between the legs and clamps to secure them together. **8** Mask the bottom edge of the bench with the solid stripes, then extend these with paint in the same colour and a very wet brush. Stop applying the paint halfway down the middle and let it drip down the bottom bench. Paint every second line, and let it dry. Then continue to do the lines in-between. Let the benches stand like this until the paint has dried completely. 🏠

[WHEN TO DILUTE PAINT]
Annie Sloan paint has a thicker consistency than most other chalk paints, and can be diluted, especially when you want to achieve the 'tear' effect we created here. Roughly 3 parts chalk paint to 1 part water should do the trick. 🏠

EASY

QUICK PROJECT GUIDE

Hard labour 1/10
Skill level 2/10
Time needed 1 day



Keen to make benches like this yourself? Find the steps of this project by Home's DIY guru Deon de Goede online at news24.com/home.

CONTACT Shelly Bergh shellybergh.com