

#23

Pretty as a picture

A water slide transfer is a great way to add interest to a drab piece of furniture.

MEDIUM

QUICK PROJECT GUIDE

Hard labour 4/10

Skill level 4/10

Time needed 2 hours



You will need

SHOPPING LIST

- Annie Sloan Chalk Paint in Old Ochre
- Annie Sloan Chalk Paint in Duck Egg Blue
- water slide transfer
- podge glue
- Annie Sloan Clear Wax
- Annie Sloan Dark Wax

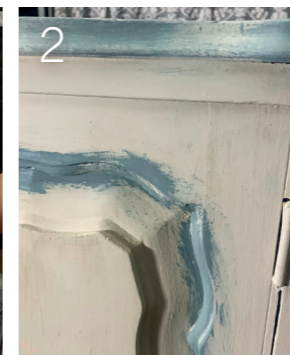
TOOLS

- small paintbrush
- spray bottle
- tray
- buff cloth

Get started...



1 Paint your piece with the Old Ochre. Use water in a spray bottle to keep the paint wet and make it easier to paint. **2** Using a small brush, add accents of Duck Egg Blue.



3 Position your water slide transfer on the spot in which you want to stick it. Score it along the edge, using your finger, and then tear along the scored line.



4 Fill your tray with water and submerge the water slide transfer. Place it face down, as the paper tends to curl up. **5** While the water slide transfer is soaking, add a layer of podge glue to the surface on which the water slide will be applied.



6 Once the film starts to come away from the paper (this should take about three minutes), gently peel the film off and position it on your piece.



7 When the transfer is dry, add more Old Ochre and water to blend in with the Duck Egg Blue. Do this all around the piece in the areas where you have added Duck Egg Blue.

8 Seal the entire piece with Clear Wax. Using a small brush, add Dark Wax in the crevices (on the sides, too) and then blend it in using a buff cloth. 🏠

By Joe Strydom
Photographs Elza Cooper and Joe Strydom
Styling Amanda van Wyngaardt

Rug from Mr Price Home;
accessories from Trouvé

STOCKISTS AND CONTACT Joe Strydom (Trouvé) 081 547 3652, facebook.com/trouveza
Mr Price Home 0800 212 535, mrphome.com